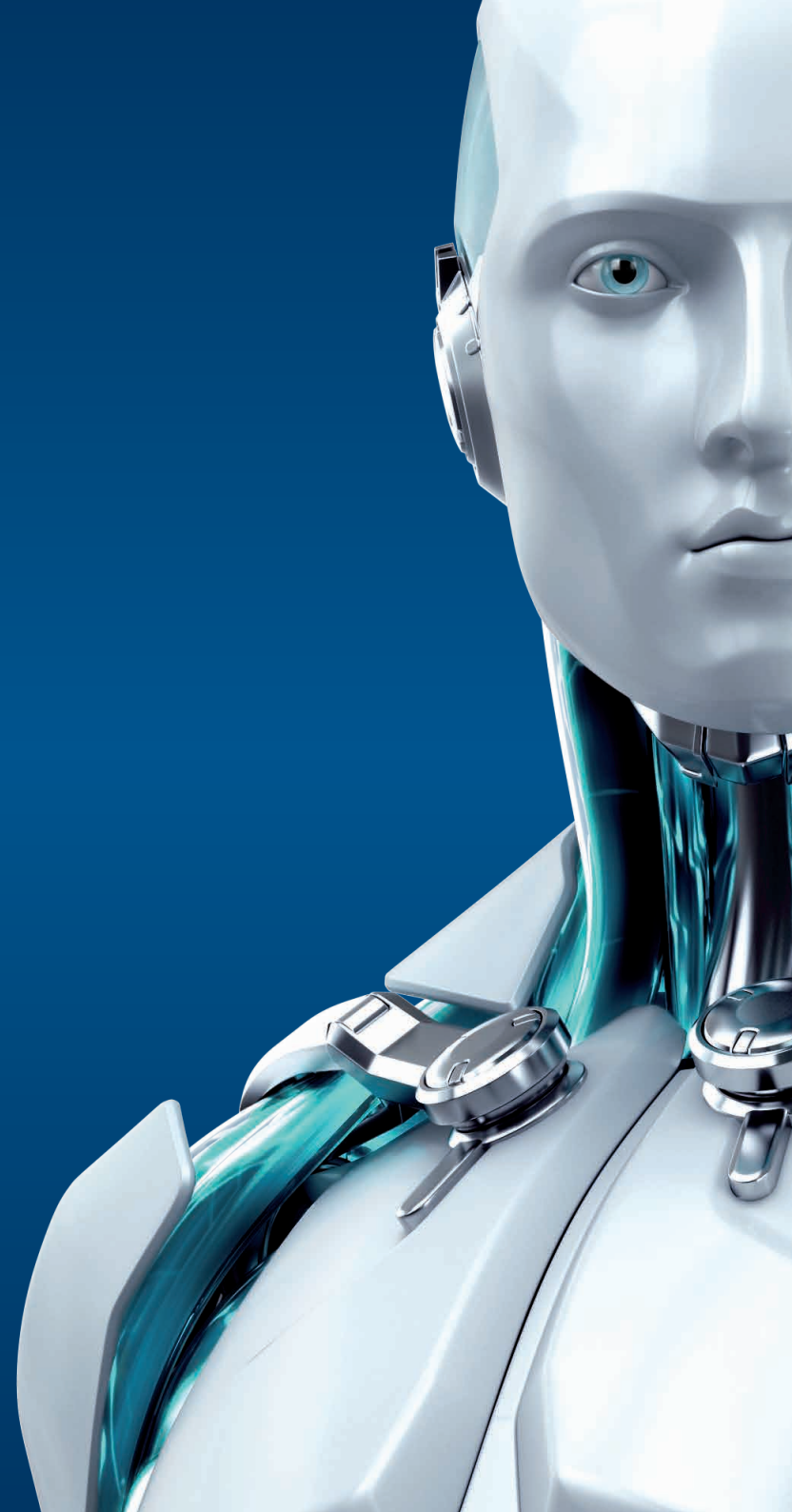




MAIL
SECURITY
FOR LINUX/BSD/SOLARIS

ENJOY SAFER TECHNOLOGY™





Operating Systems:

Linux: Kernel version 2.6.x; glibc 2.3.2 or higher
 FreeBSD: Version 6.x, 7.x, 8.x
 Sun Solaris: Version 10
 NetBSD: Version 4

Processor Architecture:

Intel®/AMD® x86/x64





ESET PREMIUM SUPPORT

Enquire about ESET Premium Support for priority access to IT security professionals 365/24/7

WHAT IT DOES

Antivirus and Antispyware

Scans all inbound and outbound POP3, SMTP and IMAP traffic
 ESETS_SMTP module runs independent of the Mail Transport Agent (MTA)
 Filters out email-borne threats, including spyware at the gateway level
 Powered by the advanced ThreatSense® technology combining speed, accuracy and minimal system impact

Antispam

Stops spam and phishing messages with high interception rates
 Features improved antispam engine with an option to define threshold levels with great precision

Cross-platform Protection

Eliminates malware targeting all platforms, including Windows, Mac and Linux operating systems
 Prevents spreading of malware from one platform to another

Remote Administration

Compatible with ESET Remote Administrator and supports management through a web interface
 Gives you the option to schedule on-demand scans, actions and security tasks
 Allows you to customize log details and modify reports and notifications to help you monitor compliance with company security standards

Smooth Operation

Features content filters for Postfix, Sendmail, Qmail, Exim, Zmailer, and others
 Smoothly integrates in the Novell Groupwise environment
 Ready for integration with Zarafa collaborative software
 Built-in license manager automatically merges two or more licenses with the same customer name

Distribution Independent Solution

ESET provides installers for the most popular distributions
 Gives you the option to use the general installation package for less common systems not supported directly